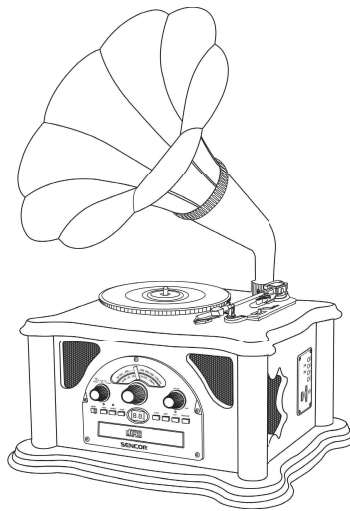




SENCOR[®]

STT 018 TUBE

TURNTABLE
GRAMOFON
GRAMOFÓN
LEMEZJÁTSZÓ
GRAMOFON
ПРОИГРЫВАТЕЛЬ
PLOKŠTELIŲ GROTVAS



INSTRUCTION MANUAL
NÁVOD K OBSLUZE
NÁVOD NA OBSLUHU
HASZNÁLATI ÚTMUTATÓ
INSTRUKCJA OBSŁUGI
РУКОВОДСТВО ПО ЭКСПЛУАТАЦИИ
VARTOTOJO VADOVAS

EN CZ SK HU PL RU LT









IMPORTANT SAFETY INSTRUCTIONS

	WARNING DO NOT EXPOSE THE UNIT TO RAIN OR MOISTURE TO PREVENT A RISK OF FIRE OR AN ELECTRIC SHOCK.		CAUTION: TO PREVENT FIRE OR ELECTIC SHOCK, DO NOT REMOVE THE DEVICE COVER (OR ITS BACK PART). THERE ARE NO SERVICEABLE PARTS THAT USER CAN REPAIR. REFER SERVICING TO QUALIFIED SERVICE PERSONNEL.
---	--	---	---

	The lightning flash within an equilateral triangle is intended to alert the user to the presence of uninsulated „dangerous voltage“ within the unit's cabinet that may cause a risk of electric shock to persons.
---	---

	The exclamation mark within an equilateral triangle is intended to alert the user to presence of important operating and maintenance instructions in the instruction manual.
---	--

CAUTION: To operate the device correctly, read the instruction manual carefully and store in a safe place for future reference. If the device needs servicing or maintenance, contact qualified personnel only.

CAUTION: In case of removing the cover, unplug the power cord from the power outlet at first.

1. Read the instruction manual

Read all instruction manual carefully after unpacking the device. Follow all operating and other instructions in the manual.

2. Power sources

This product should be operated only from the type of power source indicated on the making label. If you are not sure of the type of power supply to your home, consult your product dealer or local power company. For products intended to operate from battery power or other sources, refer to the operating instructions.

3. Ventilation

Slots and openings in the cabinet are provided for ventilation. It protects it from overheating and ensures reliable operation of the product. Do not block or cover these ventilation openings. The openings should never be blocked by placing the product on a bed, sofa, rug or other similar surface. This product should not be placed in a built-in installation such as a bookcase or rack unless proper ventilation is provided or manufacturer's instructions have been adhered to.

4. High temperatures

Do not place the device near the heating elements, stoves, fire place or other sources of heat (including amplifiers). Do not place any open flame (e.g. burning candle) on the device.

5. Water and moisture

Do not use this product near water for example near a bathtub, kitchen sink, in a wet basement, near a swimming pool and the like. Do not place any objects (e.g. vases) filled with water on the device.

6. Cleaning

Unplug this product from the wall outlet before cleaning. Do not use liquid cleaners or aerosol cleaners. Use a damp cloth for cleaning.

7. Power cord protection

Power supply cords should be routed so that they are not likely to be walked on or pinched by items placed upon or against them, paying particular attention to cords at plugs, convenience receptacles, and the point where they exit from the product.

8. Overloading

Do not overload wall outlets, extension cords, or integral convenience receptacles, as this can result in a risk of fire or electric shock.

9. Lightning

For added protection for this product during a lightning storm, or when it is left unattended and unused for long periods of time, unplug it from the wall outlet and disconnect the antenna or cable system. This will prevent from damage to the product due to lightning and power lines surges.

10. Object and liquid entry

Never push objects of any kind into this product through openings as they may touch dangerous voltage points or short-out parts that could result in a fire or electric shock. Never spill liquid of any kind on the product.

EN-1





11. Plug-in

Do not use the types of connection that are not recommended by the manufacturer. Otherwise you risk a healthy or possession danger. The socket you plug the power cord to or the AC adapter, must be easily accessible.

12. Accessories

Do not place this product on an unstable cart, stand, tripod, bracket, or table. The product may fall, causing serious injury to a child or adult and serious damage to the product. Use only with a cart, stand, tripod, bracket, or table recommended by the manufacturer, or sold with the product. Any mounting of the product should follow the manufacturer's instructions, and should use a mounting accessory recommended by the manufacturer. A product and cart combination should be moved with care. Quick stop, excessive force, and uneven surface may cause the product and cart combination to overturn.

13. Loading

Do not step or place any heavy objects on the device. If such heavy object falls, it may cause an injury or damage the device.

14. Connection

If you connect the device to another device, turn off and unplug all devices. Before connecting always read carefully the connection guide and follow the instructions.

15. Volume

Before turning on, always set the volume to minimum. In case of high volume you can damage your hearing or speakers.

16. Sound distortion

Do not leave the device to produce distorted sound for a long time. It can heat the speakers up and may cause a fire.

17. Earphones

Set reasonable volume level when using the earphones. The long-term listening at excessive volume can damage hearing.

18. Records

Do not use cracked, deformed or repaired records. They can break down or cause serious injury or damage the device.

19. Damage requiring service

Unplug this product from the wall outlet and refer servicing to qualified personnel under the following conditions:

- a) when the power-supply cord or plug is damaged;
- b) if liquid has been spilled or objects have fallen into the product;
- c) if the product has been exposed to rain or water;
- d) if the product does not operate normally by following the operating instructions. Adjust only those controls that are covered by the operating instructions as an improper adjustment of other controls may result in damage and will often require extensive work by qualified technician to restore the product to its normal operation;
- e) if the product has been dropped or damaged in any way;
- f) when the product exhibits a distinct change in performance this indicates a need for service.

20. Servicing

Do not attempt to service this product yourself. As opening or removing the cover may expose you to dangerous voltage or other hazards. Refer all servicing to qualified service personnel.

21. Replacement parts

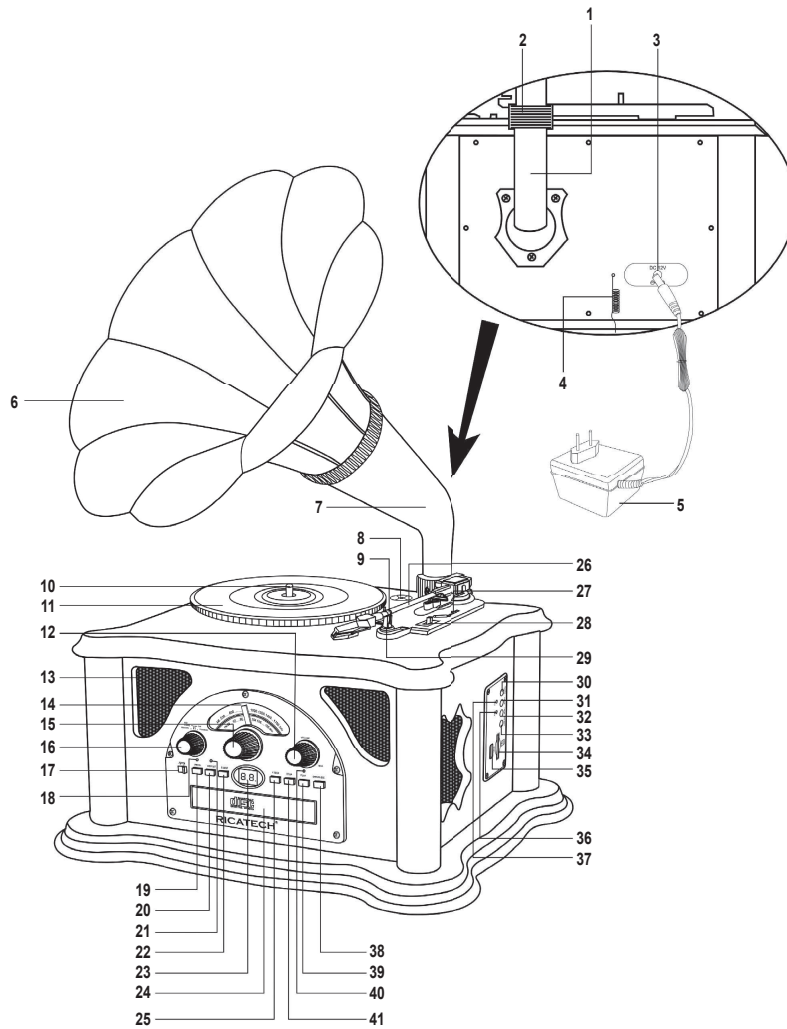
When replacement parts are required, be sure the service technician has used replacement parts specified by the manufacturer or have the same characteristics as the original part. Unauthorized substitutions may result in fire, electric shock, or other hazards.

22. Safety check

Upon completion of any service or repairs to this product, ask the service technician to perform safety checks to determine that the product is in proper operating condition.



1. DEVICE DESCRIPTION



1. The base of the record player horn
2. The lock of the record player horn
3. AC adapter jack
4. External FM antenna jack
5. AC adapter
6. The record player horn
7. The holder of the record player horn
8. Adapter to play records requiring 45 revolutions/minute
9. Hook to secure the tone arm
10. Turntable spindle
11. Turntable
12. **VOLUME** control – to switch the player on/off combined with volume control
13. Speaker
14. Tuning

EN-3

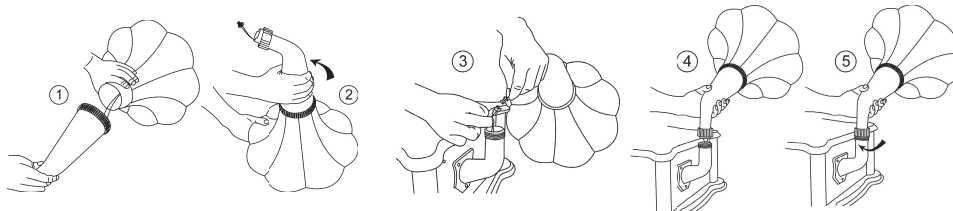




15. Tuning control
16. **FUNCTION** switch – to select signal source
17. **BAND** switch – to select bandwidth (FM or AM)
18. **LED PROGRAM** – indicates programming/playing of CD songs in order programmed by the user
19. **PROGRAM** button – to program songs from CD in order desired by the user
20. **REPEAT** button – to select the desired repeat playback mode
21. **LED REPEAT** – indicates currently used mode of repeat playback
22. Tlačítko **B.SKIP** – to skip to the beginning of currently or previously played songs from CD
23. **LED display** – to inform the user about current function/ setting of the device
24. CD tray
25. **F.SKIP** button – to skip to the beginning of following songs from CD
26. Tone arm
27. Lever for lifting the tone arm
28. Switch to set speed of the turntable
29. Tone arm holder
30. **PLAY/PAUSE** button (USB/SD) – to start /pause playback from a USB device connected to USB port or SD memory card inserted into a slot
31. **SKIP +** – button to skip to the beginning of following songs on the USB/SD
32. **SKIP –** button – to skip to the beginning of currently/ previously played songs from the USB/SD
33. **USB/SD** button – to select media for playback
34. Slot for SD memory card
35. USB connector – to connect USB to the device
36. Green **LED ACC** – flashes during playback of recording from external USB device or from SD memory card
37. **LED ERR** – lights up when you try to play from USB device or SD memory card without them being inserted or connected to the device
38. **OPEN/CLOSE** button – to open/close CD tray
39. **PLAY/PAUSE** button – to start /pause CD playback
40. **LED PLAY** – indicates CD playback
41. **STOP** button – to stop CD playback

Assembling the record player

- Remove the unit from the shipping carton.
- Remove the packaging material from the device and store it out of the reach of children until its disposal.
- Move the record player to the place of its installation.
- Open the turntable cover and remove all the plastic moldings used to secure the parts of the turntable against their movement during transport and storage.
- Remove the cover of the tip of the cartridge insert.
- Extend the FM wire antenna. After making the device operational, search for a place for the antenna, which will allow optimum reception of the desired FM stations.
- Insert the cable to connect the speaker through the horn holder according to figure 1.
- Turn the horn and its holder according to figure 2.
- Connect the speaker cable – see figure 3.
- Fasten the horn to the device – see figure 4 and secure it by tightening the horn lock – see figure 5.



Power supply

The included AC adapter is used to supply the device with power.

- Unwind the AC adapter's cable.
- Insert the adapter into the power outlet.
- Connect the AC adapter cable to the AC adapter jack on the rear of the device.





2. USING THE RECORD PLAYER

- Turn on the record player – by turning the volume control **VOLUME** clockwise, the device will be turned on after overcoming resistance (indicated by an audible click), the volume will rise with continuing turning of the control.
- Using the **FUNCTION** switch, select the **PHONO** mode.
- Set the switch **SPEED CONTROL** to position corresponding to the revolutions/ minute indicated on the record, which you want to play (33 1/3 /45 or 78 revolutions/minute).
- Place the record on the turntable. If you will play a record with a large central opening (usually so called "singles", needing 45 rev/min.), insert the included adapter on the turntable shaft.
- Using the lever **CUE LEVER** lift the tone arm. Move the tone arm to the right and after an audible click the turntable starts to turn.
- Move the tone arm over the gap before the song recording, which you want to play, and gently set down the tone arm on the record – the playback will start.
- After playing all the songs from the record, the turning will stop and the arm will lift over the record.
- Using the lever **CUE LEVER** move the tone arm in resting position.
- To switch off the player, turn the **VOLUME** control counterclockwise – the volume will gradually decrease. After an audible overcoming of resistance, the device will be switched off.

3. RADIO RECEPTION

- Turn on the record player – by turning the volume control **VOLUME** clockwise, the device will be turned on after overcoming resistance (indicated by an audible click), the volume will rise with continuing turning of the control.
- Using the **FUNCTION** switch, select the **RADIO** mode.
- Using the tuning **TUNING** control, tune in the desired station.
- Using the volume **VOLUME** control, set the desired volume.
- To switch off the player, turn the **VOLUME** control counterclockwise – the volume will gradually decrease. After an audible overcoming of resistance, the device will be switched off.

For good radio reception

- The device uses an FM wire antenna in the FM bandwidth, which is permanently attached to the device. Extend the antenna and search for its best position to receive the desired stations. For the best reception of the FM stations, use an external FM antenna – connect the antenna to the FM antenna jack at the rear of the device.
- The device uses a built-in ferrite antenna for the AM radio bandwidth. It is necessary in this case to change the position of the entire unit (turn it) in order to have the best reception of the stations.

4. PLAYBACK FROM USB / SD CARD

To play files recorded on an SD card inserted into the device or from the memory of a USB device, apply the functions used for CD playback.

Playback of the SD memory card files

- Switch off the device.
- Insert the SD memory card into the slot for memory cards containing the MP3 files.
- Switch on the device.
- Using the volume **VOLUME** control, set the desired volume.
- Using the **FUNCTION** switch, select the **USB/SD** mode.
- To start playback, press the **PLAY/PAUSE** button (USB/SD), green light on the device is flashing during playback **LED ACC**. When pressing the button again, the playback stops.
- To skip forward to the beginning of following files, use the **SKIP +** button (USB/SD), to skip to the beginnings of the previous files, press the **SKIP –** button (USB/SD).

Playback of the files from the USB device

- Turn the device off and connect a USB device with memory capacity 512MB to 4GB (USB drive, MP3 player, etc.) with the MP3 files to the USB port without using a cable. The device does not allow to play the WMA files.
- Switch on the device.
- Using the volume **VOLUME** control, set the desired volume.
- Set the switch to **FUNCTION** position **USB/SD**.
- Press the **USB/SD** button to switch to playing the MP3 files from the attached USB device.
- To start playback, press the **PLAY/PAUSE** button (USB/SD), green light on the device is flashing during playback **LED ACC**. When pressing the button again, the playback stops.
- To skip forward to the beginning of following files, use the **SKIP +** button (USB/SD), to skip to the beginnings of the previous files, press the **SKIP –** button (USB/SD).



Note:

- This player does not support USB devices connected by cable to the USB port. Besides that, it does not support using USB hubs.
- The device can play MP3 files matching the following criteria:
 - they are compatible with the MPEG 1, 2 a 2.5 formats;
 - they were recorded at data flow speed in the range of 8 to 320 kb/sec;
 - they use the FAT16 or FAT32 file system
 - sampling frequencies of 8; 11.025; 12; 16; 22.05; 24; 32; 44.1 or 48 kHz.
- Before connecting/disconnecting USB from this device, switch the device off or switch to another signal source.
- During playback from USB or during data flow between the PC and USB device do not switch off the record player or the PC – you would be risking corruption of data.
- This device does not support connection to PC.
- When trying to start playback on the device, which is not connected to USB device or which has no SD memory card inserted, the device will flash red LED ERR.
- Since the USB devices/SD memory cards are made by many manufacturers using various technologies and from various materials, compatibility of this device with all the available USB devices/SD memory cards cannot be guaranteed. In case of problems, try using a USB device/SD memory card from a different manufacturer.

5. PLAYING CD

- Set the switch **FUNCTION** to position **CD**.
- Press the **OPEN/CLOSE** button – the CD tray of the device will open.
- Place the CD on the tray and press the **OPEN/CLOSE** button to close the tray.
- Evaluation of the disk will start and afterwards the display will show data indicating the total number of tracks on the disc. Display of **00** means that there is no disc in the player.
- To start playing the disc, press **PLAY/PAUSE** button – playback will start with No. 1 song. Afterwards, all the following songs from the disc are successively played; when the last song is played the playback ends and the display shows again data indicating the total number of tracks on the disc. During playback the display shows symbol **▶**.
- Pressing the **PLAY/PAUSE** button during playback pauses the play and the display flashes symbol **▶**. To continue playing, press this button again.
- To stop the playback of the disc before playing the last track, press the **STOP** button – the display will show the total number of tracks on the disc and the symbol **▶** will be switched off in the same time.

Skipping to the beginning of the songs/search for a desired location in the recording

- Press the **F.SKIP** button during playback or pause, the player skips to the beginning of the following song and shows its number on the display. If a disc is played, the playback will start. Press repeatedly this button to skip to the beginnings of following tracks.
- Press the **B.SKIP** button during playback or pause, the player skips to the beginning of a currently played song. When you press this button again, the player skips to the beginning of the previous song, the display shows its number. If a disc is played, the playback will start. When you press this button repeatedly, you will successively skip to the beginnings of the previous songs.
- Pressing and holding the **F.SKIP** or **B.SKIP** buttons during playback will begin search for desired place in the recording on the disc forward and backward (depending on which button you press). The search is proceeding at higher speed and a somewhat lower volume (compared to a normal playback). When you release the button, the playback will continue from the found location.

Repeat playback

- For repeated playback, select the song, which you want to replay and press the **PLAY** button. After the playback of the song starts, press the **REPEAT** button – the display will flash repeat play indicator and the song will be replayed.
- To replay an entire disc, press the **PLAY** button and after the playback starts, press the **REPEAT** button twice – the display will show indicator of repeat playback and the disc will be replayed.
- To cancel the replay, press repeatedly the **REPEAT** button until the indicator of the replay **REPEAT** switches off.

Programmed playback

The player allows programming of up to 20 songs from CD to be played in the order desired by the user. When programming, follow these instructions:

1. Set the switch **FUNCTION** to **CD** and insert the disc into the player. If you play a disc, press the **STOP** button to end playback.
2. Press the **PROGRAM** button – the display shows 01 and the indicator **PROGRAM** starts flashing.
3. Using the **F.SKIP** or the **B.SKIP** buttons, select the song which you want to include in the program, confirm by pressing the **PROGRAM** button. The selected song will be included in the program and 01 on the display will change to 02.
4. Repeat steps 2 and 3 to insert other songs in the program (max. 20).
5. To play the program, press the **PLAY/PAUSE** button – the display will show **PROG** and the playback of the first song included in the program will start. The playback will end when the last programmed track is played.



Deleting program

- press twice the **STOP** button during playback or
- after the end of the program playback press the **STOP** button; or
- press the **OPEN/CLOSE** button to open the disc tray.

TECHNICAL DATA

Frequencies	AM: 530-1,600 kHz FM: 87,5-108 MHz
USB jack	high speed USB 2.0 for connecting USB external memory with a memory capacity of 512 MB to 4 GB formatted for file systems FAT16 or FAT32
Power input	18 W
Power	with AC adapter 100-240 V~, 50/60 Hz, output 12 V= / 1,2 A
Antennae	- wire FM antenna, optional connection of outside FM antenna; - ferrite built-in antenna is used for AM stations reception
Speakers	2 speakers of 4" (about 10 cm) diameter 2 1/2" tweeters

Changes of design and technical specification are subject to change without notice.



EN-7





INSTRUCTIONS FOR THE CORRECT DISPOSAL OF THE PRODUCT

Instructions and information regarding the disposal of used packaging materials

Dispose of packaging material at a public waste disposal site.

Disposal of used electrical and electronic appliances



The meaning of the symbol on the product, its accessory or packaging indicates that this product shall not be treated as household waste. Please, dispose of this product at your applicable collection point for the recycling of electrical & electronic equipment waste. Alternatively in some states of the European Union or other European states you may return your products to your local retailer when buying an equivalent new product.

The correct disposal of this product will help save valuable natural resources and help in preventing the potential negative impact on the environment and human health, which could be caused as a result of improper liquidation of waste. Please ask your local authorities or the nearest waste collection centre for further details. The improper disposal of this type of waste may fall subject to national regulations for fines.

For business entities in the European Union

If you wish to dispose of an electrical or electronic device, request the necessary information from your seller or supplier.

Disposal in other countries outside the European Union

If you wish to dispose of this product, request the necessary information about the correct disposal method from local government departments or from your seller.



This appliance complies with EU rules and regulations regarding electromagnetic and electrical safety.

Changes to the text, design and technical specifications may occur without prior notice and we reserve the right to make these changes.

